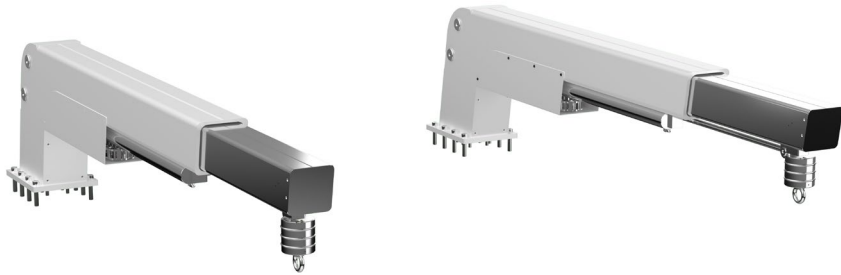


# Transom crane with fixed arm model 304F

loading capacity 200 Kg

model	A (mm/ inch)	C (mm/ inch)	D (mm/ inch)	H (mm/ inch)	I (mm/ inch)	M (mm/ inch)	N (mm/ inch)	Cable length (mm/inch)	Capacity standard (kg/lbs)	Weight (kg/lbs)
304F/21	1710 67 <sup>1</sup> / <sub>8</sub>	2375 93 <sup>3</sup> / <sub>8</sub>	665 26 <sup>1</sup> / <sub>8</sub>	545 21 <sup>1</sup> / <sub>2</sub>	255 10"	1870 73 <sup>3</sup> / <sub>8</sub>	170 6 <sup>7</sup> / <sub>16</sub>	2000 78 <sup>3</sup> / <sub>4</sub>	200/440	455/1000



Fixed arm transom crane composed of two shaped arms fixed to the boat transom and two shifting elements to move the tender astern.

Possibility of product certification.

